

SPECIALIZED TRAUMA AND FRACTURE CARE



A Guide for Patients

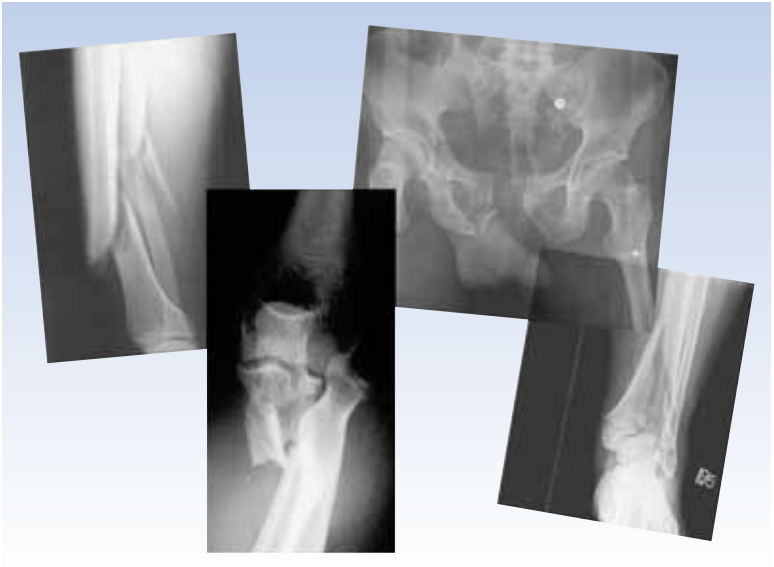
Midwest
Health Care Network



When Orthopaedic Trauma Strikes, Strike Back with Specialized Trauma and Fracture Care

No one plans to have or be involved in an accident, but when the unexpected happens, Midwest Sports Medicine stands ready to provide prompt, expert care. Whether you have suffered a single broken bone, multiple fractures or severe soft-tissue injury, our fellowship-trained orthopaedic trauma specialist will provide the best possible care to ensure the best possible outcome.

Trauma patients will also benefit from the caring, comprehensive service provided by the range of orthopaedic specialists within our practice—board certified subspecialists, physiatrists, physical therapists, Occupational Therapists and X-ray technologists.



Expertise at Every Level

At Midwest Sports Medicine our trauma specialist provides expertise not only in acute care, but also reconstructive care. This means that we treat orthopaedic trauma immediately after it happens—and manage any needed bone, joint or soft-tissue reconstruction in the days and weeks that follow.

Understanding Splints and Casts

Orthopaedic trauma often requires the application of splints or casts, which are used to support and protect injured bones and soft tissue. They also reduce pain and swelling. Splints or “half casts” provide less support than casts and are more able to accommodate swelling.

Casts are custom made of plaster or fiberglass. Casts provide rigid protection for injuries to the bones. The cast may need to be changed as the swelling subsides and it becomes loose. As your fracture heals you may transition to a splint, either off-the-shelf or custom made. These splints may be removed for therapy or bathing. Your doctor will explain how to properly care for your cast or splint and how to use your injured limb while it heals.

Rehabilitation Expertise for Rapid Return to Activity

We are also pleased to offer our trauma patients the services of board-certified physiatrists—physicians trained in a branch of medicine called Physical Medicine and Rehabilitation (PM&R) or physiatry (pronounced fizz ee at´ tree or fizz eye´ uh tree).

Physiatrists often manage the rehabilitation aspect of patient care, evaluating the patient’s physical needs and developing aggressive, personalized programs that focus on restoring function. In addition, physiatrists are trained to assess patient’s social, psychological and vocational needs. Toward that end, they regularly coordinate, supervise and collaborate with other healthcare professionals, such as physical therapists, occupational therapists or athletic trainers, to ensure complete recovery and return to activity.



Web Site

For additional information about our practice or our physicians, please visit our web site at www.midwestsportsmed.com

The Difference Is...Better Care.

Our team of physiatrists and their staff are committed to exceeding your expectations. Come experience what makes us special, ***the difference is...BETTER CARE!***

Call now...

To schedule an appointment or to get more information:
Please call our central scheduling desk at 847-944-9889



901 Biesterfield Road
Elk Grove Village, IL 60007
847-437-9889
Fax: 847-437-4149

375 S. Roselle Road
Schaumburg, IL 60193
847-437-9889
Fax: 847-301-2829

975 E. Nerge Road, Suite N-140
Roselle, IL 60172
847-437-9889
Fax: 847-944-1240

25 E. Schaumburg Road, Suite 201
Schaumburg, IL 60194
847-437-9889
Fax: 847-437-4149